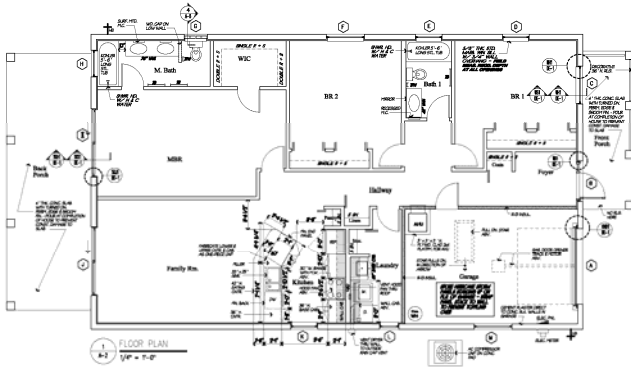


David Porter's Volunteer Work

Organization:	Service dates:	Position and Duties:
City of Palm Beach Gardens <u>Art In Public Places Committee</u>	1989 through 2004; 2008 to present; Chair 2011-	Member; chair for 1998-2004; vice-chair 2009 to present. The committee reviews all developer's art installations required by the city's Art in Public Places ordinance (AIPP). The committee also commissions and installs art for the city from AIPP fees paid into an Art Fund by developers when they choose not to install AIPP required art at their projects.
School District of Palm Beach County (SDPBC): <u>CORC</u> (Construction Oversight and Review Committee)	Aug. 2002 to present Chair of CORC January 2008 to present	Architect member of 14-member, citizen-committee (10 members are required to have a construction and development related background) appointed by the School Board to oversee the construction and physical plant operations of the SDPBC: 1. Monthly review of all construction related information associated with \$250 - \$350 million annual school development budget (review of 300 to 1300 pages of monthly documentation). 2. CORC subcommittees formed as needed to focus improvement efforts in select areas (i.e. contractor retainage, architect and contractor selection process, minority involvement, etc.).
SDPBC Construction Purchasing- <u>Architect and Contractor Selection Committees</u>	Aug. 2002 to present	As a part of CORC, serve as a member on many shortlist and final selection committees to choose architects and contractors to build SDPBC projects; review 3 to 22 detailed qualifications proposals per committee, attend a 2 to 3-hour shortlist discussion and selection meeting, and then attend a 4 hour final presentations meeting of the shortlisted firms to select the most qualified firm for each project.
<u>SDPBC Building Department Design Standards Committee</u>	2007 to present	Serve as the CORC representative on a select committee of school district building, planning, program management, and maintenance staff to fine tune the district's standard specifications and to review and rule on requested variances to the district's design standards, construction standards, and to the Building Code.
<u>Independent Sales Tax Oversight Committee</u> (ISSOC)	2005 to present	Serve as the CORC representative on a 15-member oversight committee established by the SDPBC to manage a \$1.5 billion construction budget to be partially paid for by a \$500 million special, 5-year local sales tax approved by voter referendum for construction of a specific list of schools; vice-chair 2009-present
<u>Construction Career Academy Architect</u> – Atlantic High School “Eagle Nest” project, Delray Beach, FL	2004 to 2009	Serve as the architect advisor to this school's construction academy (students being trained to go into the construction trades after high school). For the “Eagle Nest” project, the class will design and build a house on a vacant lot in Delray Beach, FL. The city will provide the financing. The house will be sold to a public service worker. Profit from the house sale will help fund future Academy construction projects. 1. Architect-member of jury to pick winning submission of a house design prepared by 3 student teams. 2. Assist winning design team with house design refinements to make it a marketable house. 3. Prepare the construction drawings to be used for obtaining a building permit and by the students for building the house. 4. Provide ongoing e-mail and phone assistance to the class teacher and advisors during construction of the house. 5. Make some site inspections of the student's work to make sure it is correct and to help them understand the inspection process.

<u>SDPBC Construction Career Academy Choice Programs assistance</u>	2005 to present	Work with the SDPBC Choice Programs staff to help better define the construction career academy programs (CCA), working with local architects and contractors, state law restrictions and write legislature to get laws modified for ease of student-built projects on school grounds; recruit local contractors to become mentors to the 4 CCA programs.
<u>Construction Career Academy Architect</u> – Seminole Ridge High School, Loxahatchee, FL	2005 to 2010	Serve as the architect advisor to this school’s construction academy. <ol style="list-style-type: none"> 1. Teach 3 to 4, two-hour classes per year. Help the students understand construction, development, architecture, what architect’s do, what it takes to become an architect, drawings, & CAD systems. 2. Help the students define the project they want to take on as their design and construction project. Teach students how to research project needs, spaces, sizes, construction, etc. 3. Work with SDPBC planning and construction staff to obtain design restrictions, as-built site information 4. Prepare design drawings, 3D presentation, and construction drawings for student construction projects (2005-2007: Ticket & Athletic Storage Building; 2007-2009: School Entrance security building).
	2010 to present	<ol style="list-style-type: none"> 1. Help prepare ACE Mentoring curriculum (Architecture-Construction-Engineering) for Construction Academy program. 2. Help negotiate program and write contract for the Construction Academy to work with Habitat for Humanity to design and have the students build a pre-fabricated modular house to be placed on a Habitat property. 3. Work with the students on the house design and construction methods. Serve as the volunteer architect to prepare the design and construction drawings for Habitat. 4. Work with local crane and rigging company to work out getting the house from the school shop to the Habitat property. 5. Assist students and teacher with the ongoing construction work on the Habitat house. 6. Create website for the Habitat house to provide information and progress updates.
<u>Florida chapter of American Institute of Architects</u> – Building Codes Advisory Committee	2011-present	<ol style="list-style-type: none"> 1. Advise the Florida AIA Board on matters affecting the Florida Building Code. 2. Advise on code matters that should be brought before the Legislature for action, changes, and improvements to Codes.
<u>International Codes Council</u> – Interpretations Committee	2012-2014	<ol style="list-style-type: none"> 1. Serve on a national committee of codes officials, architects, engineers, and contractors to review and make Code decisions based on interpretations and consensus agreement of the committee.

ATLANTIC HIGH SCHOOL CONSTRUCTION ACADEMY "Eagle Nest" House



Atlantic High School student-designed floor plan; const. dwg. by David Porter

Atlantic High School "Eagle Nest" students "holding up" their work at the tie beam forming stage 4-2007



Atlantic HS "Eagle Nest" house ribbon cutting April 28, 2009

SEMINOLE RIDGE HIGH SCHOOL CONSTRUCTION ACADEMY "Ticket Booth" Project



Rendering of the proposed Seminole Ridge HS Ticket Building and Athletic Storage Building to be built on the school campus
(drawing by David Porter)



Seminole Ridge students showing the work they have done on the Ticket Building up to the tie beam elevation 12-2007

TICKET BOOTH PROJECT

2005 - 2009 Seminole Ridge Community High School Construction Academy

This building was conceived, designed, and constructed by the students listed on this plaque as a part of their training, education, and curriculum in the Construction Academy at this school. This building is a testament to their interest, efforts, perseverance, sweat, and diligence. All building materials were donated to the Construction Academy by the generosity of the local community and construction trades.

Student Contractors:

Joseph Alvarado Wesley Ayala Mitchell Baer Daniel Baltazar Ryan Bennett Mark Blinnar Raymond Bones Justin Bowles Alicia Candlish Austin Coleman David Colburn Dahiel Davis Kyle Davis Eric Dennis Christian Dick	Garrett Dietrich Bill Downing Veronica Drane Olivia Floressi Travis Ford Adam Foutly Sean Germuska Matthew Gooden Eric Goodhead Dean Greer Justin Hammastfahr John Haney Anthony Heine Spencer Heine Jeremy Helmuth	Tyler Holman Ryan James Matthew Johnson Trace Jones Christopher King Evan Knowles Travis Krueger Brian Kuzynski Wesley Lachance Logan Locklear John Love Kenneth Malusky David Mason Daniel McBryer Joseph McCoy	Thomas McGoldrick Dylan Meares Charles Neil Tyler Newfield Michael Pasnicola Chad Parker Bryan Pobbano A. Phoebe De Leon Zachary Probst Matthew Raymond Chase Rice Thomas Rietwys Sean Rochester Joseph Robiano David Schlinger	Charles Shumate Cody Slaino Jeremy Slingo Trista Slingo Jared Swink Kevin Swink Brandon Thomason Brett Undercutter Eric Wagner Zachary Whitehead Alec Wigdeman Taylor Wilhelm Brandon Wolfe Kyle Wooten Matt Wooten
------------------------------------------------------------------------------------------------------------------------------------------------------------------------------------------------------------------------------------------------------------	---------------------------------------------------------------------------------------------------------------------------------------------------------------------------------------------------------------------------------------------------------------	------------------------------------------------------------------------------------------------------------------------------------------------------------------------------------------------------------------------------------------------------------	---------------------------------------------------------------------------------------------------------------------------------------------------------------------------------------------------------------------------------------------------------------------------	---------------------------------------------------------------------------------------------------------------------------------------------------------------------------------------------------------------------------------------------------------------

Principal: Lynne McGee, Ed.D. Academy Instructor: Rick Terkovich
Architect: David Porter AIA Magnet Coordinator: John Walker

Project Completed Spring 2009

Bronze plaque on building, containing all "student contractor" names who worked on the project (designed by David Porter)



Completed project April 2010

SEMINOLE RIDGE HIGH SCHOOL CONSTRUCTION ACADEMY “Habitat House” Project

www.seminoleridgehabitathouse.com



Seminole Ridge Construction Academy Habitat House

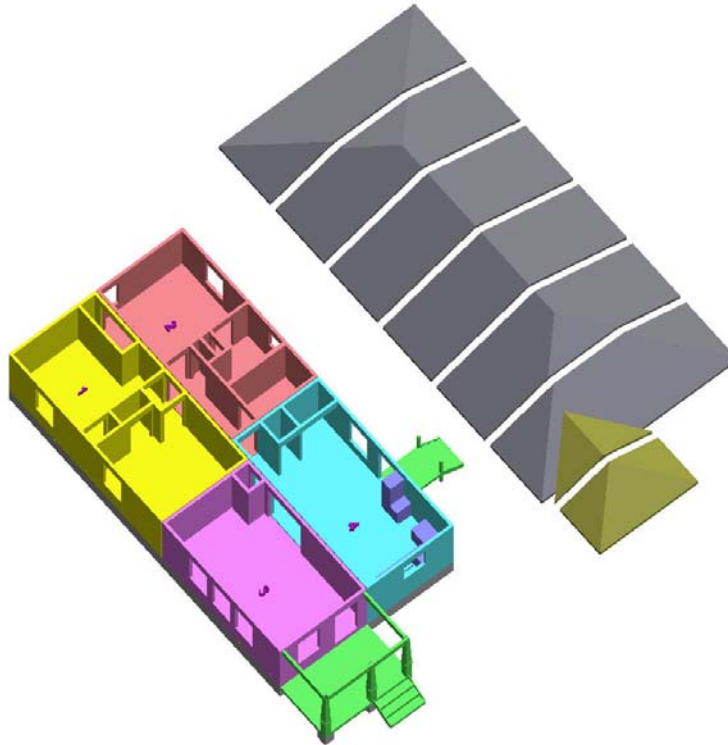
**A Joint Venture Project Between
the School District of Palm Beach County and Habitat for Humanity**

Volunteer Architect:
David Porter AIA
Palm Beach Gardens, FL
FL Lic. No. 11067

A Single-Family, Modular house, to be built by the Seminole Ridge High School Construction Academy students and then transported and erected onto a foundation to be built by Habitat for Humanity on a Habitat property in West Palm Beach

Volunteer Erection Contractor:
Royal Concrete Concepts
West Palm Beach, FL

February 2011



Exploded View of the 4-part modular house and roof segments (all to be student-fabricated in the Academy’s shop)

Visit www.seminoleridgehabitathouse.com for information & progress updates